



## **EZ775-4 Peco G to E-Z Air® 4 Turnout Conversion Kit**



Actuators, toggle valves, fittings and 100' of tubing are included for the installation. You need to supply a source of clean compressed air at 40 psi.

We recommend that an air filter of 40 micron maximum size be included in your system, such as our EZ600 35 micron filter, if your air supply is not filtered.

An EZ050 1/8"NPTM to 1/16" barb fitting is included to convert from your source of air to the standard E-Z Air tubing size. An EZ260 6 station manifold is included to split the air line for connecting to the EZ610 toggle valves. An EZ210K barb plug is supplied to plug any unused barbs on the EZ260 manifold. EZ610 toggle valves mount in a 15/32" to 1/2" or 11.9mm to 12.7mm hole.

The air from the manifold is input to the black barb fitting on the EZ610 valve. Run the connecting tubing from the white fitting on the EZ610 valve to the black fitting on the EZ575 Actuator.

The available throw of the actuator is approximately 1/2" . This is sufficient for the Peco 45mm gauge turnouts SL-995 and SL-996.

Tools needed will be a small hand drill or pin vise, drills of the size #35 and #53, a sharp knife, a pair of small pliers and a screwdriver to fit the screws holding the current turnout motor or manual throw to your turnout.

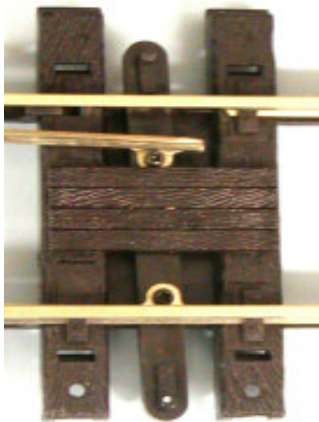
The E-Z Air actuator is strongly sprung in the closed position. Trains cannot push the points open as they pass through. If the train tries to go through the turnout that is set "against" it, it will derail. The E-Z Air unit is only activated by air in the "reverse" position. Mount the unit on the side of your turnout that will provide the "normal" route with no air applied. This is usually the main line route.

You will have to drill mounting holes in the ends of the ties that straddle the tie bar. These are the ties that have the ends open. Drill the top end of the tie with the #35 drill back about 0.265" from the end, making a pair of mounting holes as shown below. Drill the end of the tie bar up through the center of the "peg" (or where desired) with the #53 drill. This hole will be used for attaching the linkage wire.



Mount the conversion unit loosely, using the black screws provided, with the wire below the tie bar. Hold the points over against the side of the turnout the conversion unit is mounted on, the "normal" route. Note how much offset must be provided for to allow the wire to pass on the bottom of the tie bar. This will be about 1/8". The offset should be completed in about 1/4". See the photo above.

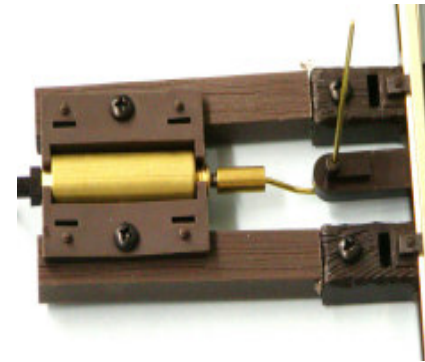
Insert the actuator and linkage back into the conversion unit. Note where the linkage wire must be bent to enter the hole in the



PECO G45 turnout with new holes in the tie ends and tie bar.

tie bar drilled earlier. Bend the wire 90 degrees about 1/16" short, so that spring tension will be applied to the points to hold them closed in the "normal" or no air applied position.

Insert the wire through the hole in the tie bar and snap the actuator into the conversion carrier. Snug the mounting screws. Test the operation of the unit with 40 psi (2.75 bar) compressed air. Adjust the wire bends as needed to get proper operation. If you are using the hole in the center of the peg for the wire, you may cut the wire off flush with the top of the peg or bend it over. If using a hole elsewhere on the tie bar, bend the end of the wire over, forming a "U" or "Z" bend in the end to prevent the wire coming out during operation. Cut off excess wire. Install on your layout.



EZ575 installed on a PECO G45 turnout, ready for cutting the wire and installing the cover.

Parts included in the EZ775-4 Kit:

- (4) EZ575 Actuators (Actuator, Conversion Carrier, linkage wire Assy., screws)
- (4) EZ610 toggle valves
- (1) EZ401N 100' 1/16" id brown E-Z Air tubing
- (1) EZ260 6 station manifold and mounting screws
- (1) EZ210K barb plug
- (1) EZ050 1/8"NPTM to 1/16" barb fitting (EZ050-B for B version)
- (1) EZ775-4 Instructions