



EZ610, EZ620 & EZ630 Toggle Valves, EZ650 & EZ655 Throttle Valves and EZ690 Air Indicators Installation Instructions



Shown above are the EZ610, EZ620, EZ630, EZ650 and EZ690.

All toggle valves, the throttle valves and the air indicator mount in a 15/32" to 1/2" or 11.9mm to 12.7mm hole. These are common sizes for electrical toggle switches. Drills and hole punches are available in these sizes. The maximum panel thickness is about 1/4" or 6.5mm for all but the EZ650 and EZ655 throttle valves, which require an 1/8" or 3.2mm panel thickness or less for panel mounting. If mounted on the side of a EZ610, EZ620 or EZ630, this requirement doesn't apply to the EZ650 Throttle Valve. A minimum of 2" or 50.8mm is needed under the panel to clear the toggle valves and the connecting tubing.



An EZ610 with an EZ650 mounted on the side, and an EZ650 with the EZ651 kit installed and ready for panel mounting

To mount the EZ650 Throttle Valve to an EZ610, EZ620 or EZ630 valve, remove the relevant barb fitting from the valve. On the EZ610 and EZ620, this is usually the white fitting. Place a 10-32 nylon washer (supplied with the EZ650) on the EZ650 male end and screw the EZ650 into the valve until the gasket lightly compresses. Place the barb fitting removed from the valve into the throttle valve's female port and tighten as above. If the orientation of the EZ640's outlet is in the wrong place, try using 2 of the nylon washers between it and the toggle valve. Use the knurled knob on the EZ650 to adjust the rate of air flow for the best operation.

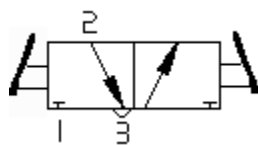
To mount the EZ650 in the panel, an EZ651 Panel Mounting Kit is required. This converts the EZ650 to barb inlet and outlet fittings, which is required for panel mounting. Place a 10-32 gasket on the EZ650 male end and screw the 10-32 coupling onto the EZ650 body snugly, converting the 10-32 male port to a 10-32 female port. Place 10-32 gaskets on each of the 10-32 to barb fittings and screw them into the two 10-32 female ports. Either barb can go in either port. Air flow direction is not important in a EZ650 Throttle valve, but a black and a white fitting are supplied for inlet and outlet.

An EZ655 Throttle Valve is available for direct panel mounting without adding any additional parts. The inlet and outlet are 1/16" barb fittings, ready to accept your air lines.

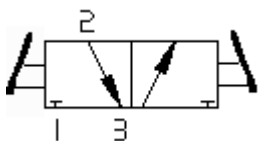


The EZ690R and EZ690G Air Indicators are used to show if a line is pressurized or not, as in a line going to an actuator. If you need a remote indication of pressure present, insert a tee fitting into the line and run another line to an Air Indicator in a location of your choice. You can see at a glance if the line has pressure. The Indicator will show color for pressure, black for none.

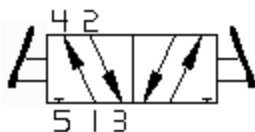
For those of you who can use this information, here are some pneumatic symbols for the EZ610 - EZ620 - EZ630 valve products.



EZ610 Toggle Valve



EZ620 Toggle Valve



EZ630 Toggle Valve